

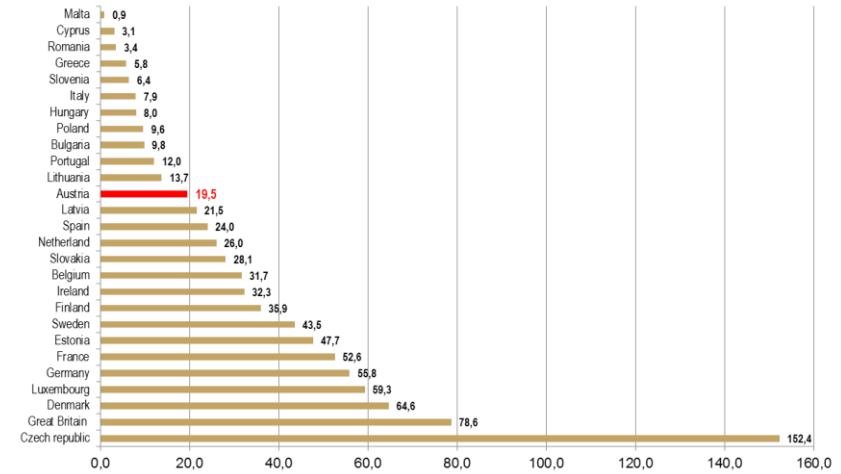
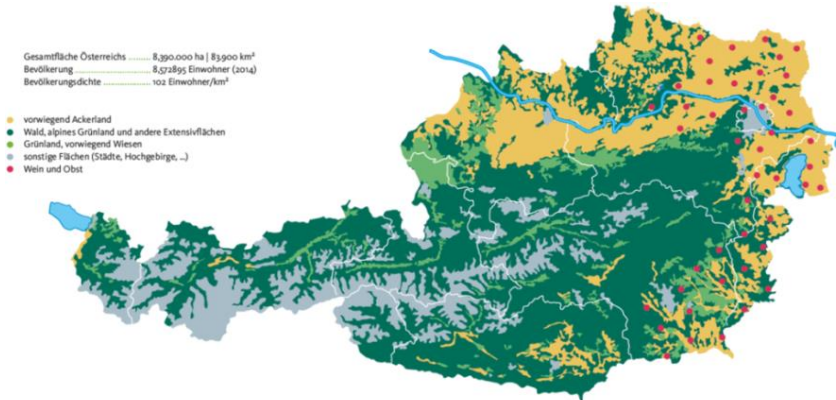
CAP 2020+ and aspects of land take in Austria



lk

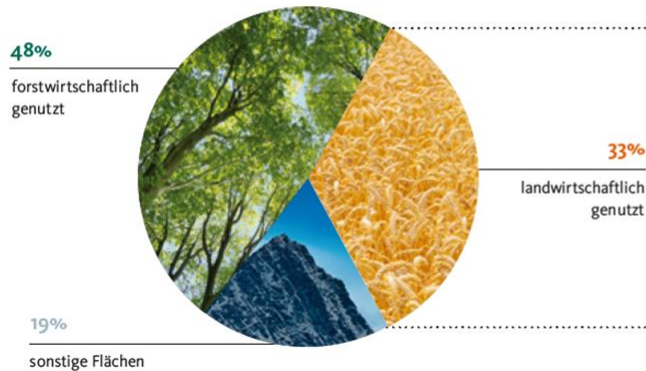
landwirtschaftskammer
österreich

Austrian Agriculture – Land use

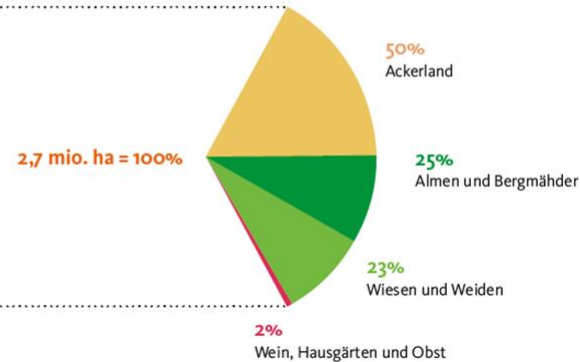


Quelle: EUROSTAT

FLÄCHENVERTEILUNG IN ÖSTERREICH



VERTEILUNG DER LANDWIRTSCHAFTLICH GENUTZTEN FLÄCHE



CAP Budget proposals 2021-2027

- Multi-annual Financial Framework:
 - + 18 % = 1,114 % gross national income
 - 10 % CAP funds (from 36 % to 28,5 % of EU-Budget)

In billion euro, current prices

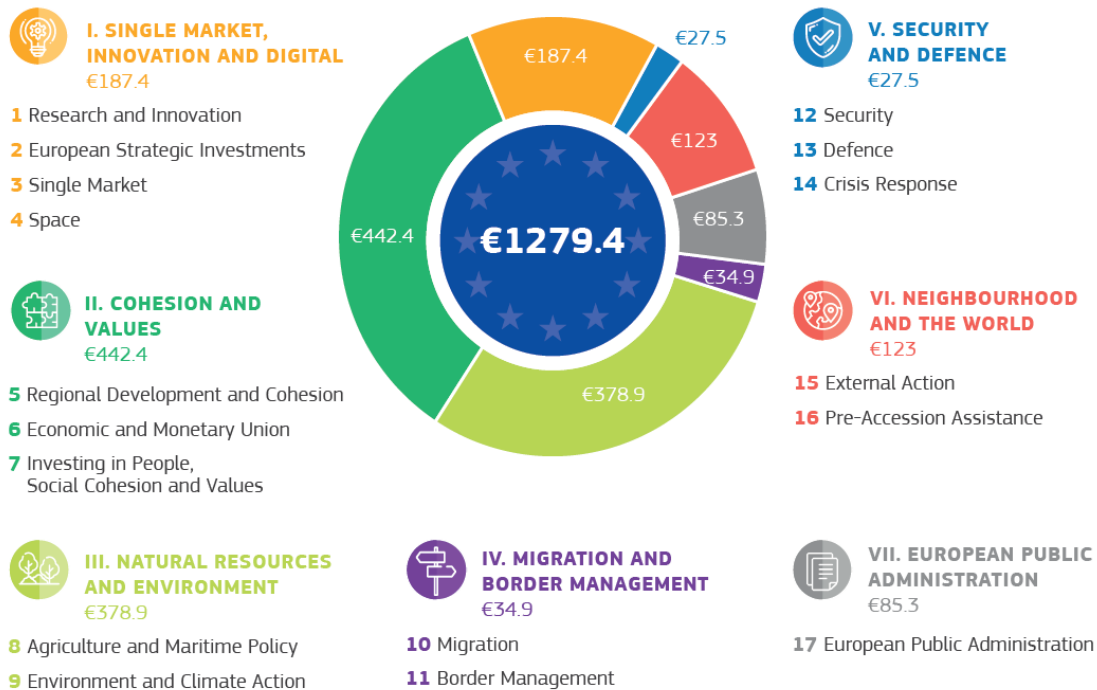


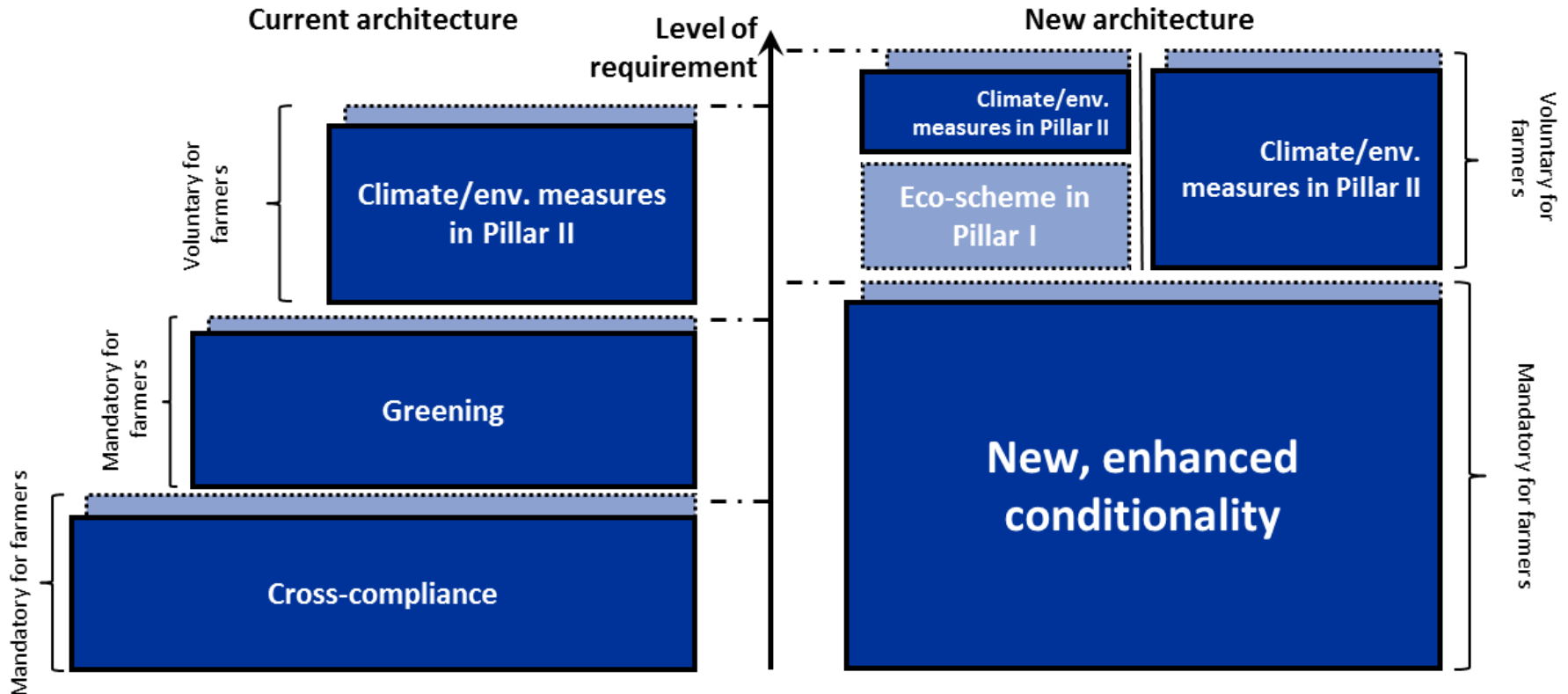
Chart: EC

CAP principles

- **delivery model** -> from a compliance-based to a performance-based
- more **subsidiarity** -> development of a **national CAP Strategic Plan** for both pillars
- **enhanced conditionality** -> current cross-compliance + Greening + additional conditions
- Interventions in **pillar 1**: Basic income support for **sustainability**, redistributive payment, young farmers, coupled income support, payment for small farmers and **eco-schemes**
- Reduction of direct payments: Degression/**Capping** (EUR 60.000/ EUR 100.000)
- Interventions in **pillar 2**: **agri-environmental measures**, natural or other area-specific constraints, risk management, cooperation, ...



Increased ambition for environment and climate



Increased ambition for envi and climate action

- **40 % of CAP-budget allocated for climate measures**
 - compensation for agri envi climate commitments (when farmer goes beyond mandatory requirements)
- **enhanced conditionality (Art. 12f)**
 - Additional requirements in order to achieve the envi and climate objectives
- **eco schemes (Art. 28)**
 - Obligatory for the MS, voluntary for farmers
 - Higher than basic requirements of enhanced conditionality
 - annual payment
 - to support / incentivise farms to observe agri practices beneficial for climate and envi
- **agri-environmental measures (Art. 65)**
 - 30% of rural development funding allocated to envi, climate and biodiversity



Critical elements of further increased ambition for envi and climate action

New enhanced conditionality/strengthened elements:

SMR (statutory Management requirement: 16)

GAEC (Standards for good agri and envi condition of land: 10)

- **rejected by LKÖ:**

GAEC 1: Maintenance of permanent grassland **on a farm level**

GAEC 5: **Nutrient Management Plan on farm level**

GAEC 7: **No bare soil in winter**

GAEC 9: minimum share **of agricultural area** devoted to non productive features or areas

GAEC 10: Ban on converting/ploughing permanent grassland **in Natura 2000 areas**

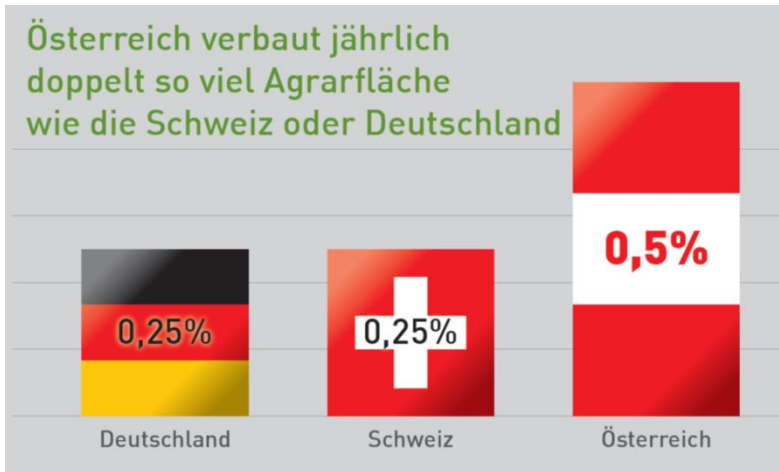


LKÖ-position:

1. keep **CAP-budget stable**
2. no enhanced conditionality without **additional compensation**
3. **avoid distortion** of competition (similar strategic plans between MS)
4. strengthen **flexibility** (especially AEM)
5. voluntary measures: **incentive** component
6. focus on **guidance** not on sanctions



Österreich verbaut jährlich doppelt so viel Agrarfläche wie die Schweiz oder Deutschland



Entwicklung der Ackerfläche pro Kopf in Österreich

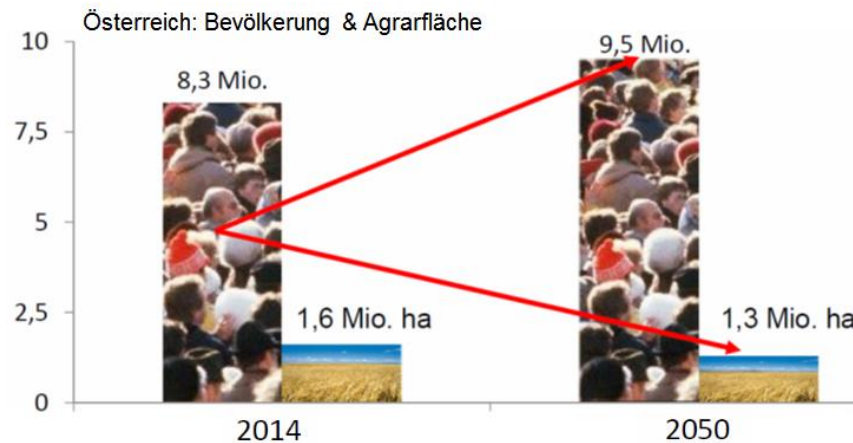
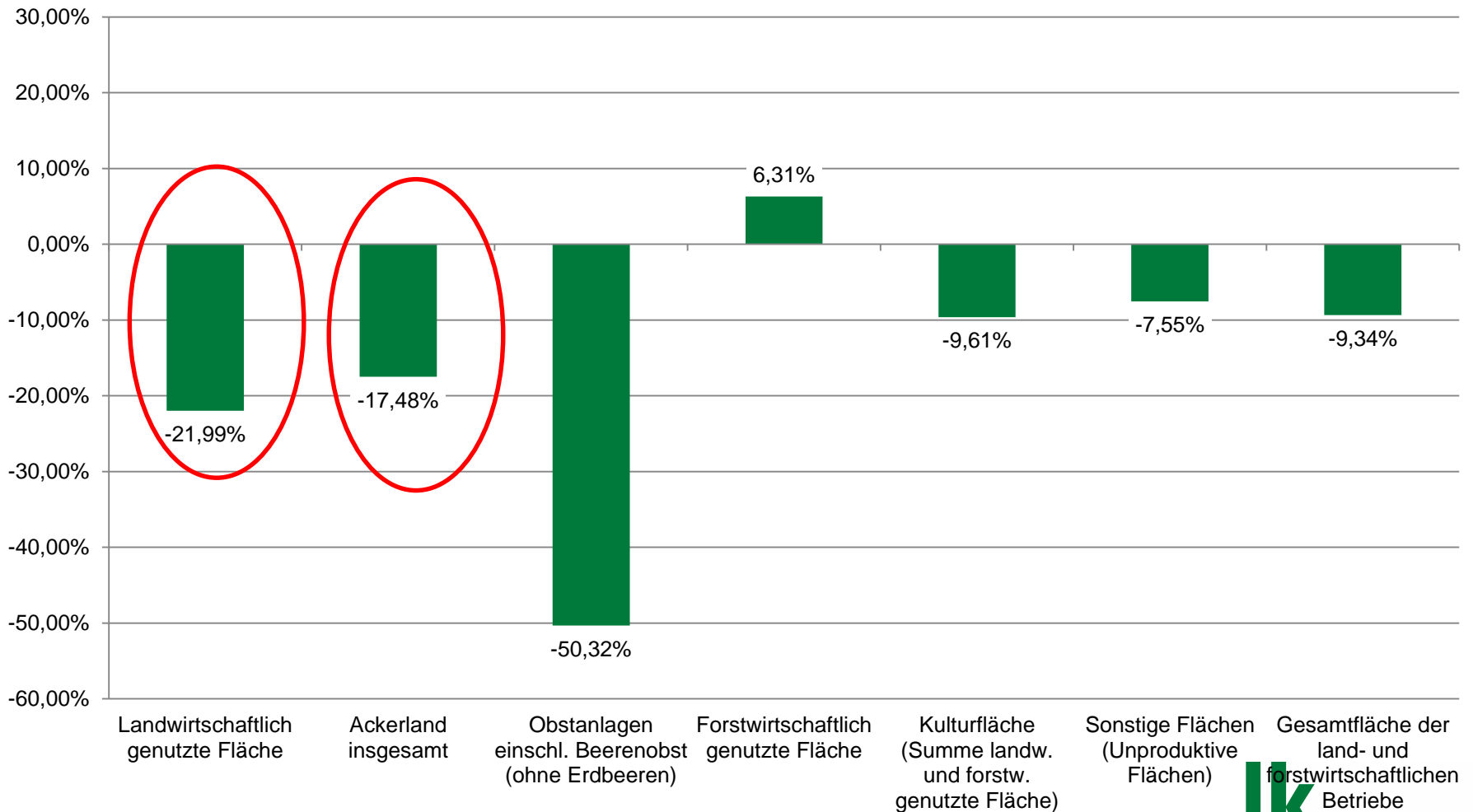


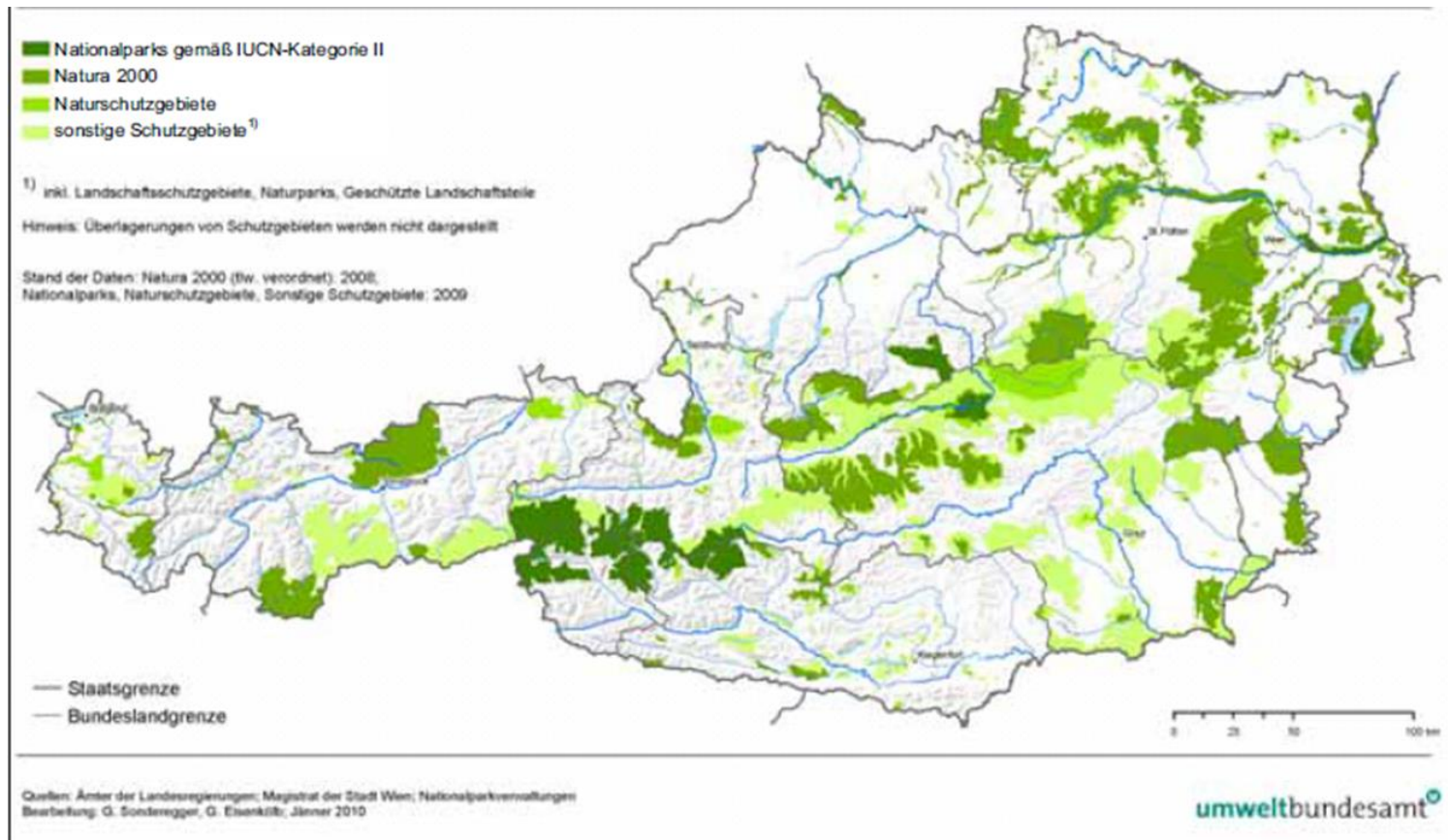
Chart: Hagelversicherung

Decline of agricultural land between 1960/2011 in A (in %)



Quelle: Grüner Bericht, LK Österreich Zahlenbücher 1960-2000, Statistik Austria
Rundungsdifferenzen technisch bedingt

Competition between Areas: Areas of conservation by nature protection law



27 % of Austria's area is protected by nature legislation

Thank you for your attention

Martin Längauer

Legal- and
Environmental Policy

Austrian
Chamber of Agriculture

Schauflergasse 6, 1015 Wien

E: m.laengauer@lk-oe.at

W: www.lk-oe.at

