

ÖPUL 2015

The current Agri-environmental Programme
(ÖPUL 2015–20) and challenges for the next period
(ÖPUL 2020+)



© BMNT

DI ANDREA OBWEGER, MSc

Directorate-General II - Agriculture and Rural Development

Vienna, 10 April 2019

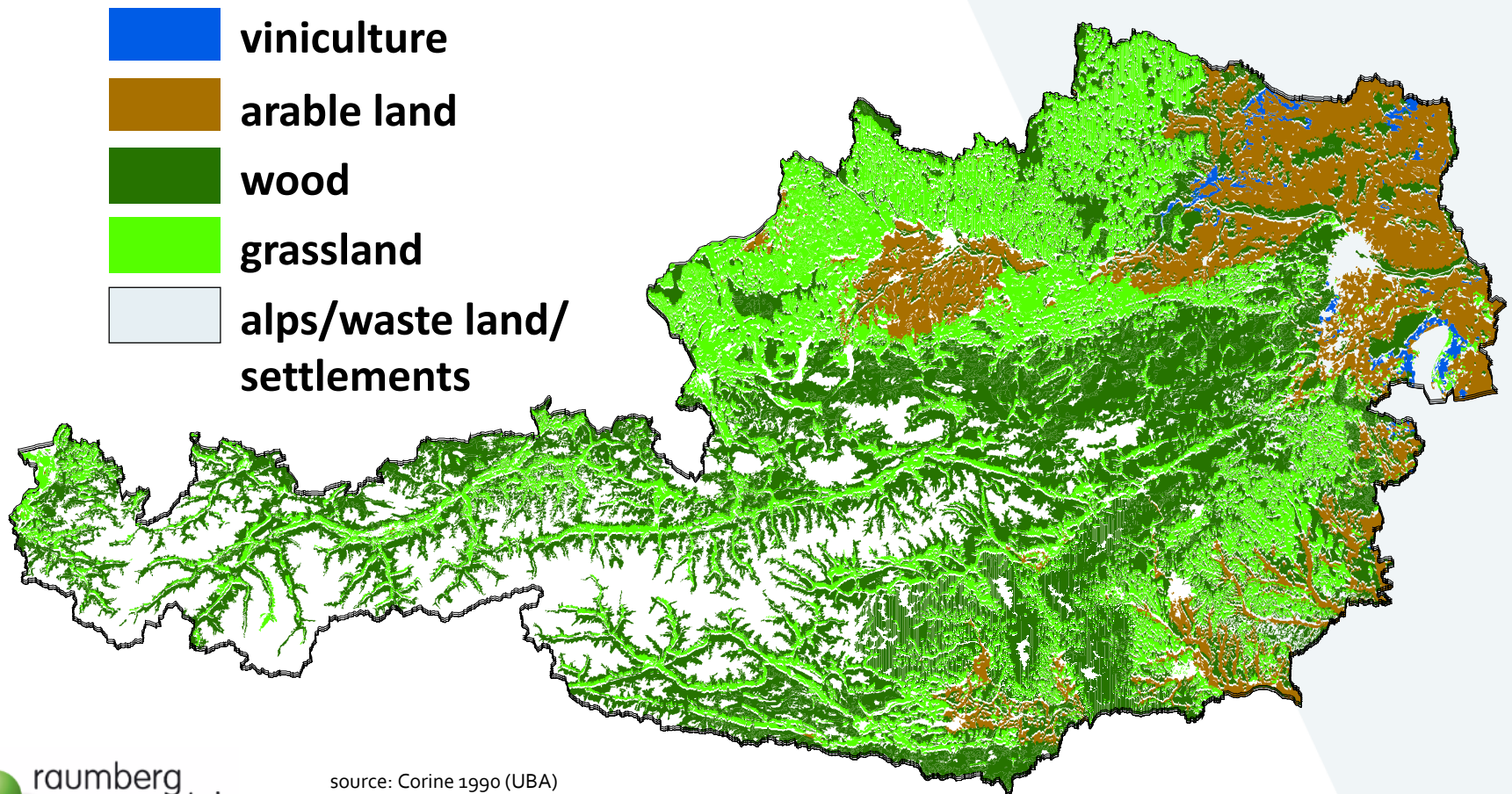
Structure of Austrian agriculture

- family-farm-based agriculture
- Ø 18.7 ha UAA
- ~ 110,000 IACS-farms, ~60% part-time farmers
- high proportion of less favoured areas (3/4 of the UAA)
- high diversity of production sectors
- high proportion of organic farming (1/4 of UAA)
- regional food important for consumers
- export important for Austrian agriculture
- 80% of agricultural holdings participate in ÖPUL
- CAP payments have high share on farm income



© BMNT (2015)

Land use in Austria



Land use in Austria: arable land



© BMNT (2015)

Land use in Austria: mountain areas



© BMNT (2016)

Structure of the CAP

CAP 2014–20

Common Market Organization Direct Payments

Common Market

- intervention rules
- export refunds
- competition rules
- etc.

Direct Payments

- basic payment scheme
- greening payment
- payment for young farmers
- voluntary coupled support
- small farmers scheme

*cross compliance
greening*

100% EU financed

European Agricultural Guarantee Fund (EAGF)

Rural Development 2014–20

6 thematic priorities

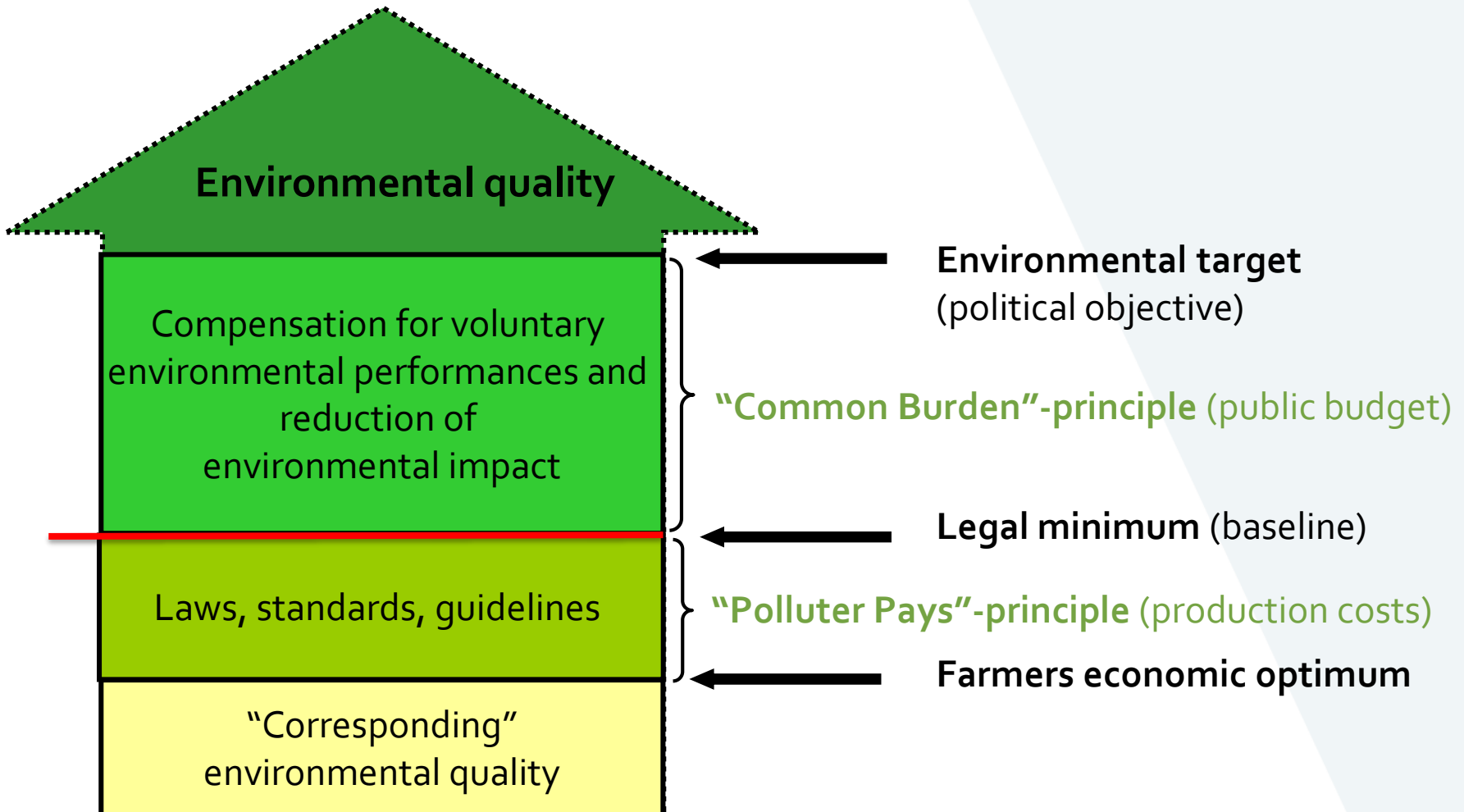
e.g. innovation, competitiveness,
food chain organisation, ecosystems, resource
efficiency, economic development in rural areas

**implementation of the priorities
via measures**

financed by EU and AT funds

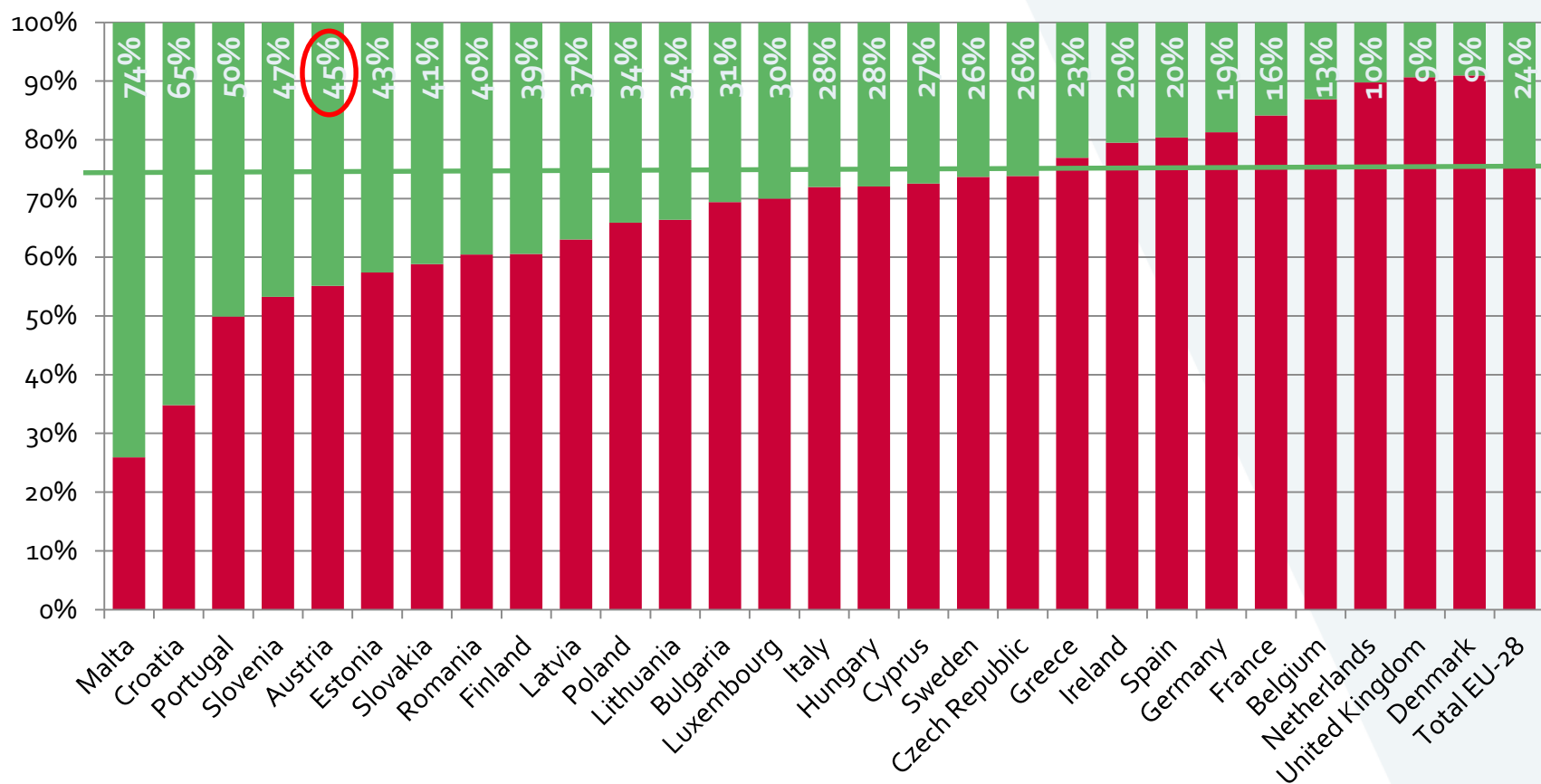
**European Agricultural Fund for Rural
Development (EAFRD)**

Links between regulations



source: adopted from www.oecd.org/tad/sustainable-agriculture/44737935.pdf

Share of EU payments 2015–20



source: European Commission (2015)

■ Direct Payments (2015-20)

■ Rural Development (2015-20)

Soil health management in CAP I: cross compliance

CROSS-COMPLIANCE

GAEC 1: Ban on ploughing and converting permanent grassland	➤ establishment of buffer strips along water courses
GAEC 4: Minimum soil cover	➤ greening of uncultivated arable land and permanent crops
GAEC 5: Minimising soil erosion	➤ limitation of tillage of frozen and water saturated soils ➤ erosion measures on steep slopes
GAEC 6: Ban on burning arable stubble	➤ maintenance of soil organic matter level through appropriate practices
GAEC 7: Retention of landscape features	➤ hedges, ponds, ditches, trees in line/in group/isolated, field margins and terraces

Soil health management in CAP I: greening

GREENING

Maintenance of permanent grassland

- maintenance of permanent grassland on **national level**
- designation of **environmentally sensitive permanent grassland**

Crop diversification

- **max. share of crops**
(e. g. max. 75% of one crop)

Ecological Focus Areas (EFA)

- **min. 5% EFA** on arable land

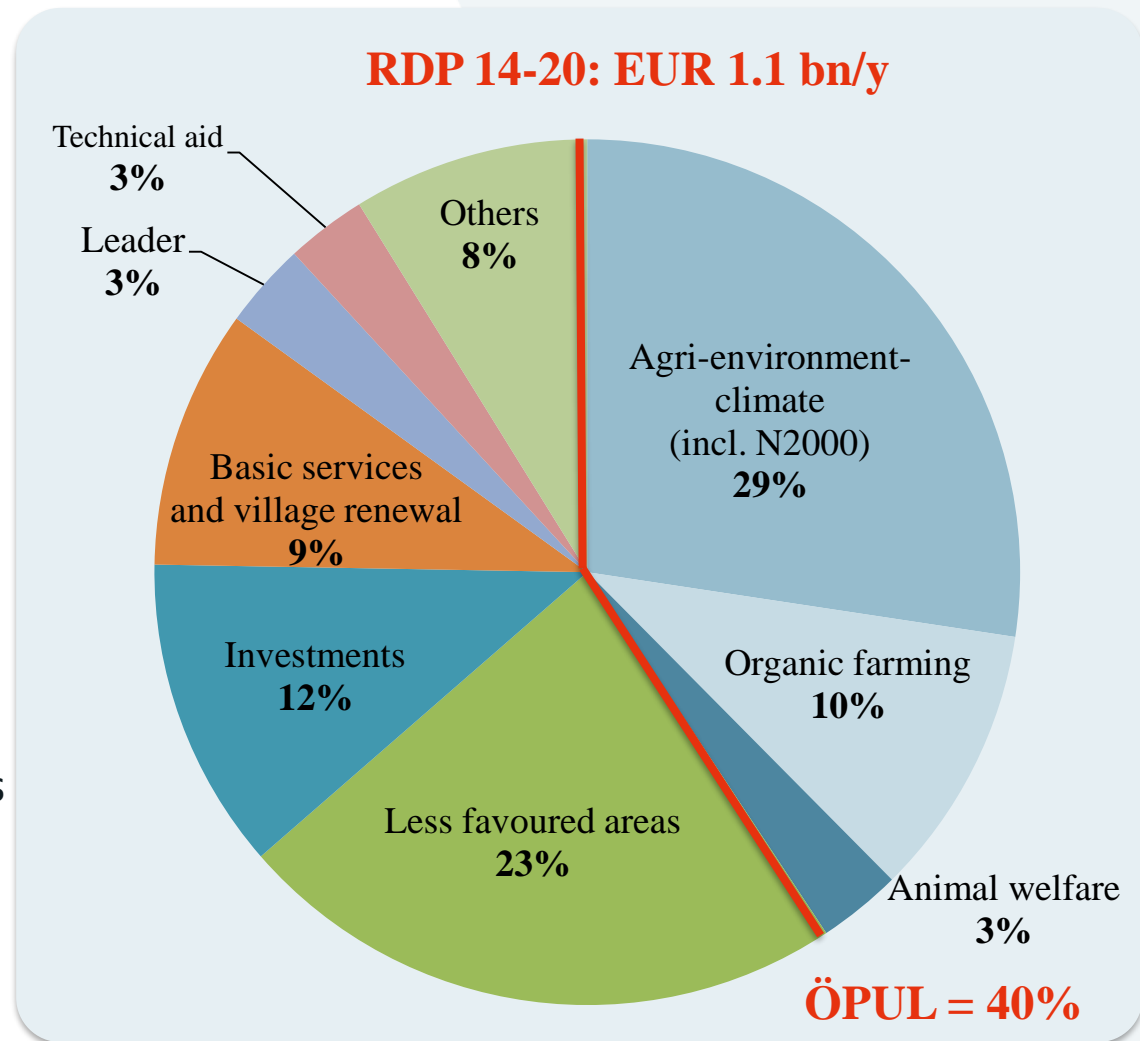
Soil health management in CAP II

- **Area-related measures**

- Agri-environment
- Organic farming
- Less favoured areas

- **Project-related measures**

- Productive investments
- Non productive investments
- Education and training



Soil protection in Austria

- food security, water protection, climate action
- key objectives:
 - reduction of water and wind erosion
 - sustainable soil fertility and carbon storage
 - prevention of phosphorous inputs
- sustainable agricultural practices



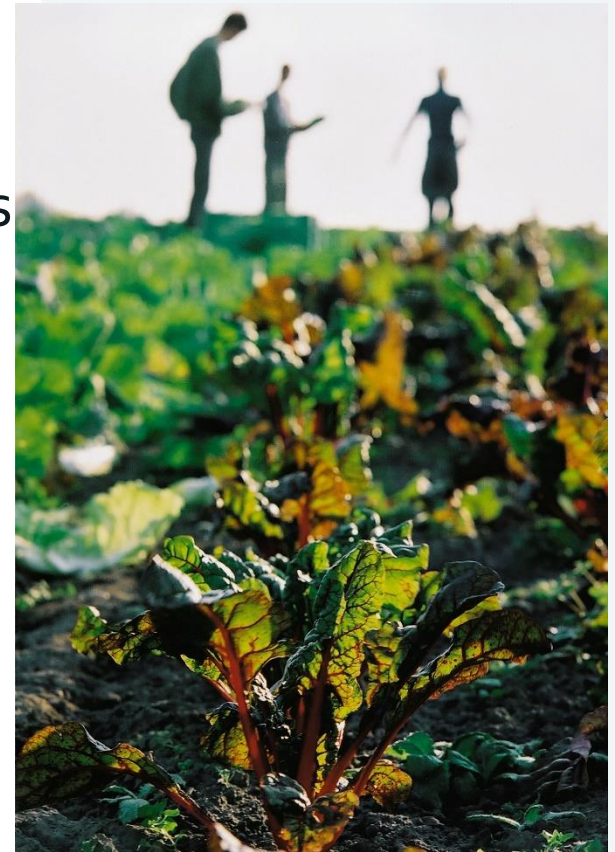
© BFW (2008)



© BMNT (2016)

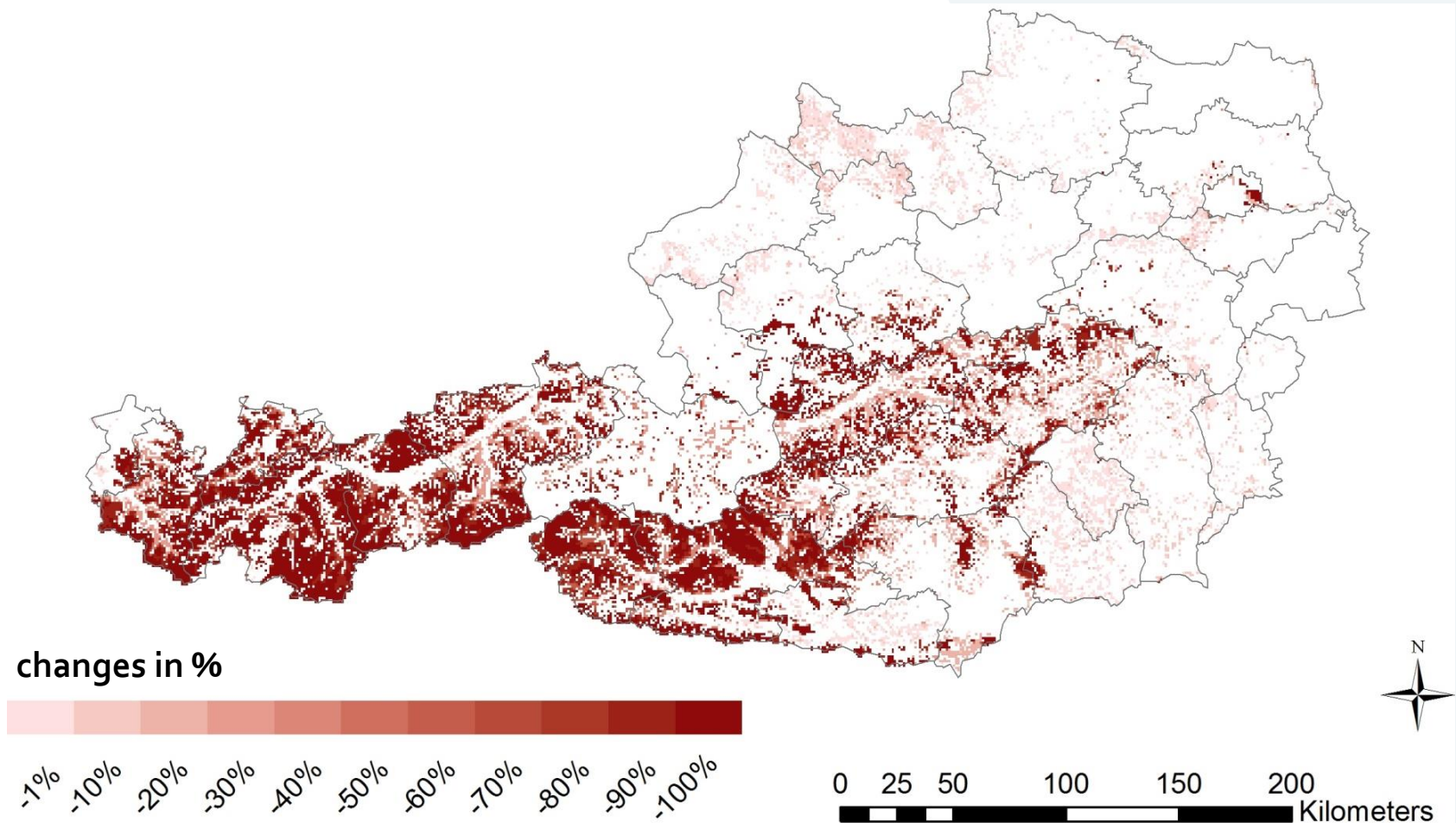
Main challenges in agriculture

- **topography:** high risk of soil erosion
- **economical advantages** of arable crops that are prone to erosion
- trade-off between **erosion control** and **use of pesticides**
- **climate change**
- **societal demands**



© BMNT

Changes in agriculture without RDP: loss in grassland area



source: Sinabell (2018)

ÖPUL 2015

Legal framework

- **measures:** biodiversity, water quality, soil protection, climate protection and adaptation
- **5 to 7 year** commitments
- commitments going **beyond mandatory standards**
- **payments** granted **annually**
- compensation for **additional costs** and **income foregone**



Strategy in Austria

- high **participation rates** and broad **land-coverage**
- **prevention of environmental risks**
- **clear requirements** for application, implementation and controls



© BMNT

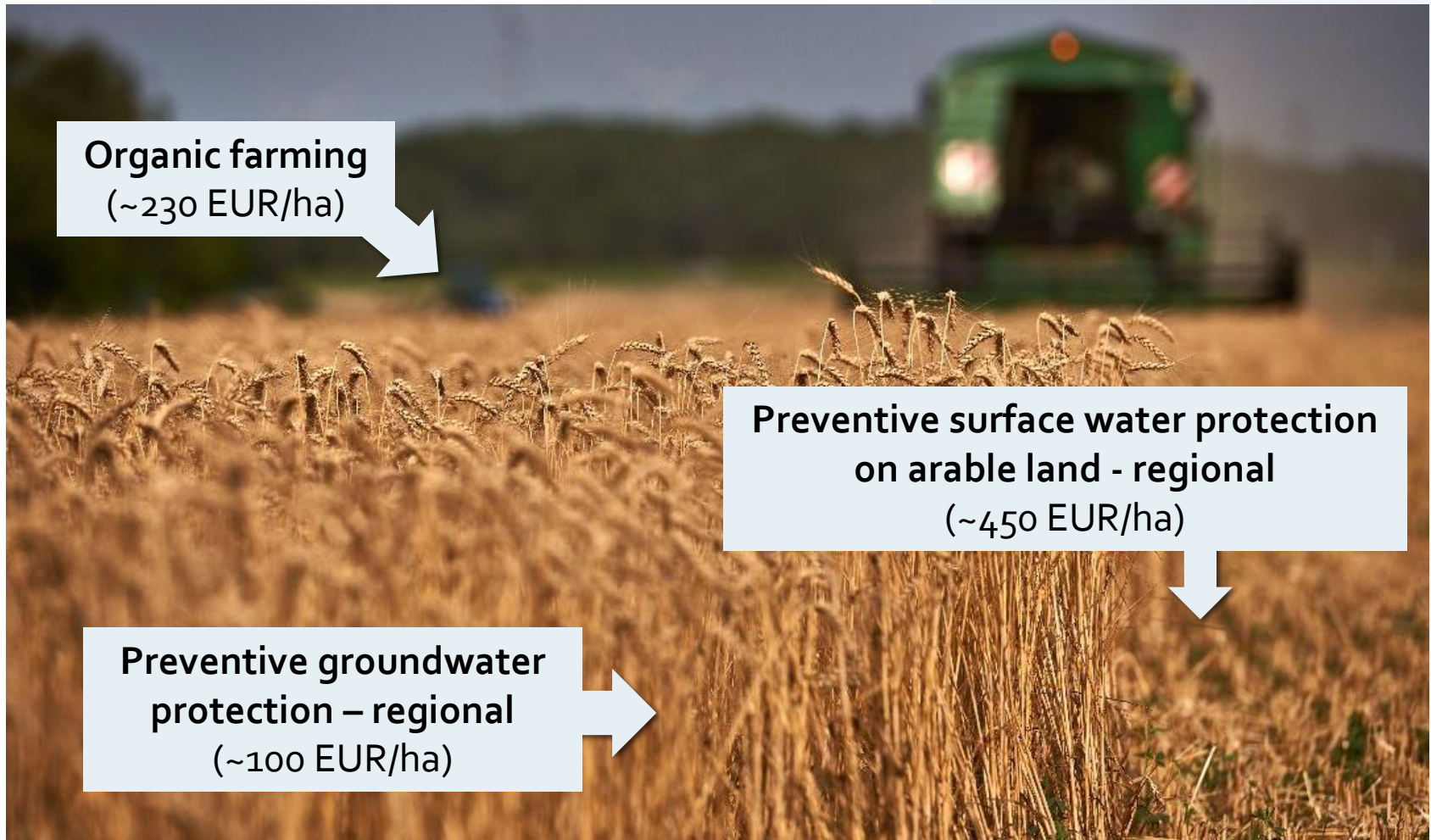
ÖPUL 2015: measures

Art. 28 Agri-Environment-Climate Measure						Art. 29 Organic Farming	Art. 33 Animal welfare	Art. 30 Natura 2000
General	Arable land		Grassland		Permanent Crops			
Environmentally friendly and biodiversity promoting management	Greening of arable land/ intermediate crops	Preventative groundwater protection (regional)	Mountain grazing and herding	Renouncement of silage	Erosion protection for fruit, vineyards and hops	Organic farming	Animal welfare - grazing of livestock	Natura 2000 - Agriculture
Nature conservation **	Greening of arable land/ system "Evergreen" **	Preventative surface water protection on arable land (regional)	Cultivation of mowed mountain grassland **	Maintenance of endangered livestock breeds	Pesticide renouncement in vineyards and hops		Animal welfare - stable	Water Framework Directive - Agriculture
Surface-near spreading of liquid farm manure	Direct seeding and seeding on mulch	Management of arable areas particularly threatened by leaching			Use of beneficial organisms in greenhouses			
Limitation of yield increasing inputs *	Cultivation of rare agricultural plants **	Renouncement of fungicides and growth regulators *						

* Mandatory combination with measures "Environmentally friendly and biodiversity promoting management"

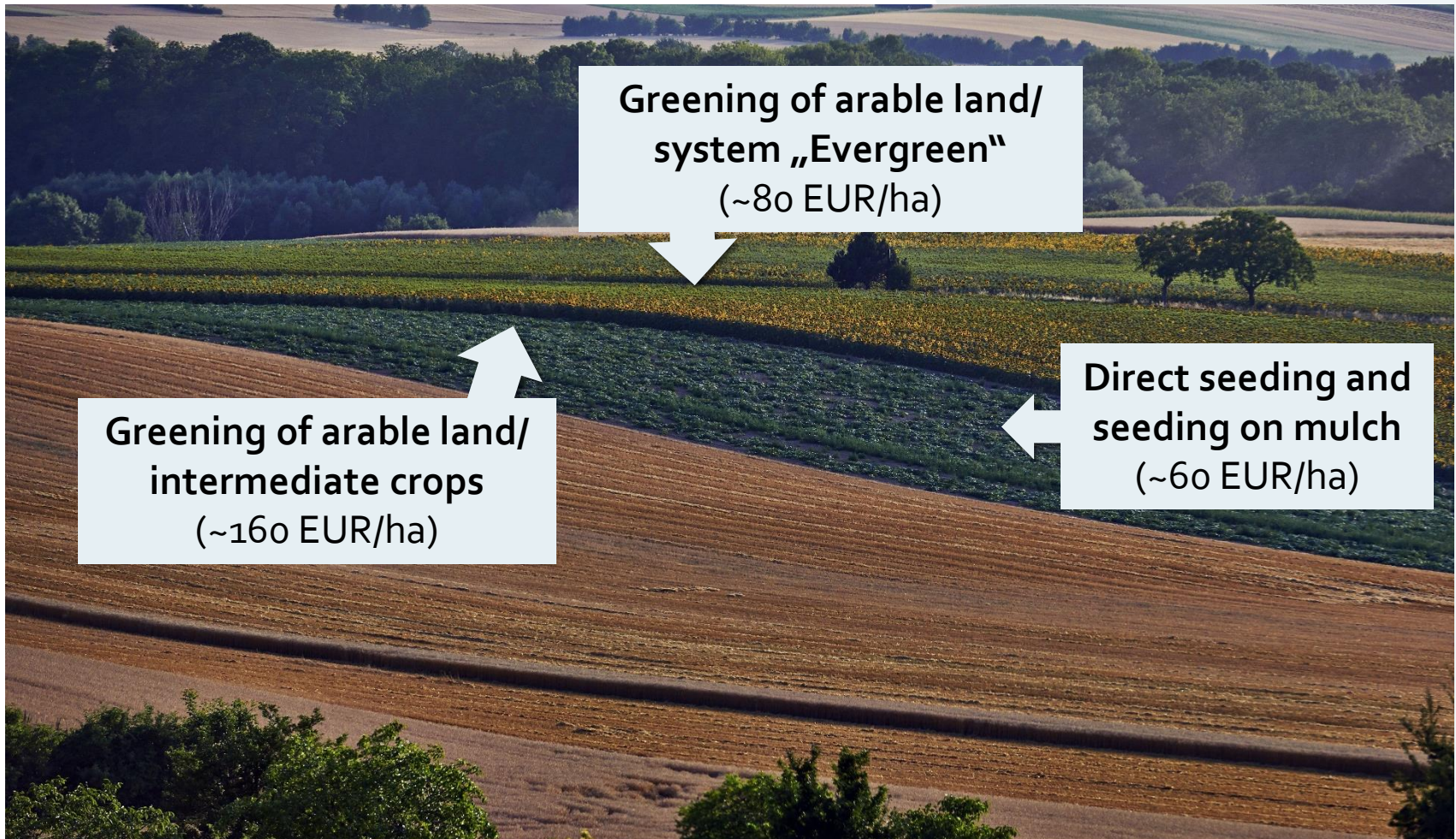
** Mandatory combination with measure "Environmentally friendly and biodiversity promoting management" or "Organic farming"

ÖPUL 2015: soil conserving measures (1)



© BMNT (2015)

ÖPUL 2015: soil conserving measures (2)



© BMNT (2015)

ÖPUL 2015: soil conserving measures (3)



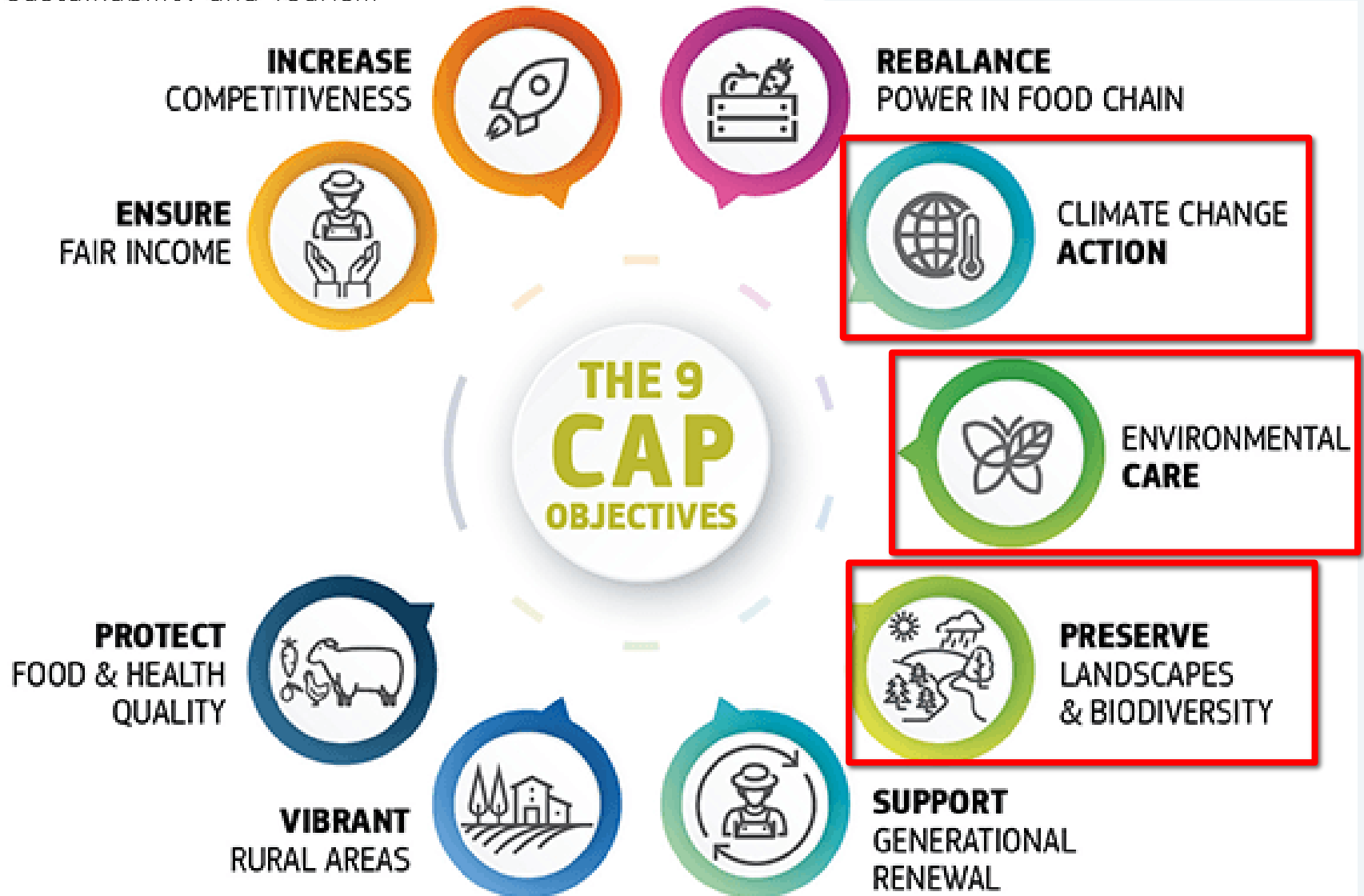
**Management of arable areas
particularly threatened by leaching
(~450 EUR/ha)**

**Erosion protection for
fruit, vineyards and hops
(~200 EUR/ha)**

CAP 2020+

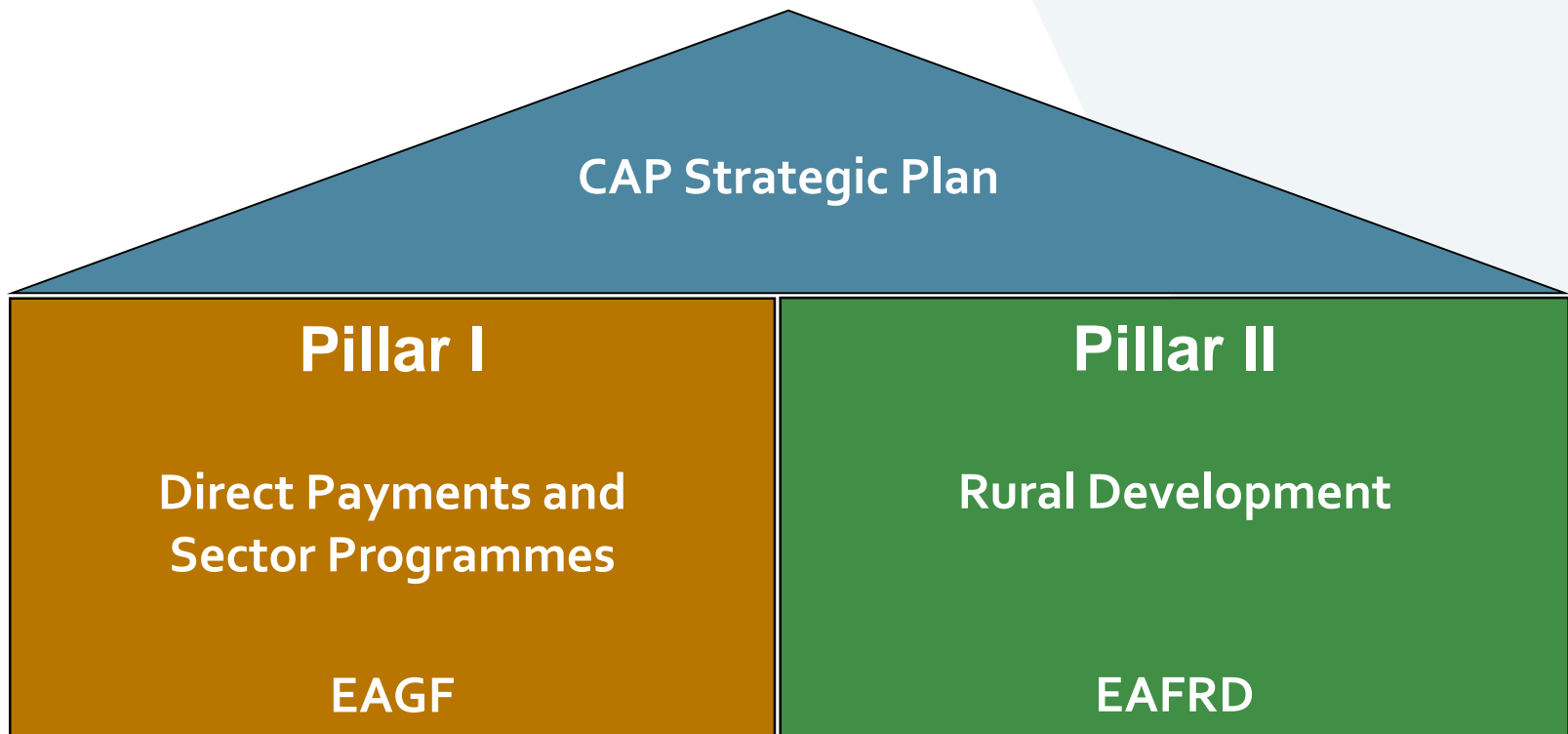


© BMNT



source: European Commission (2019)

Redesigning the CAP



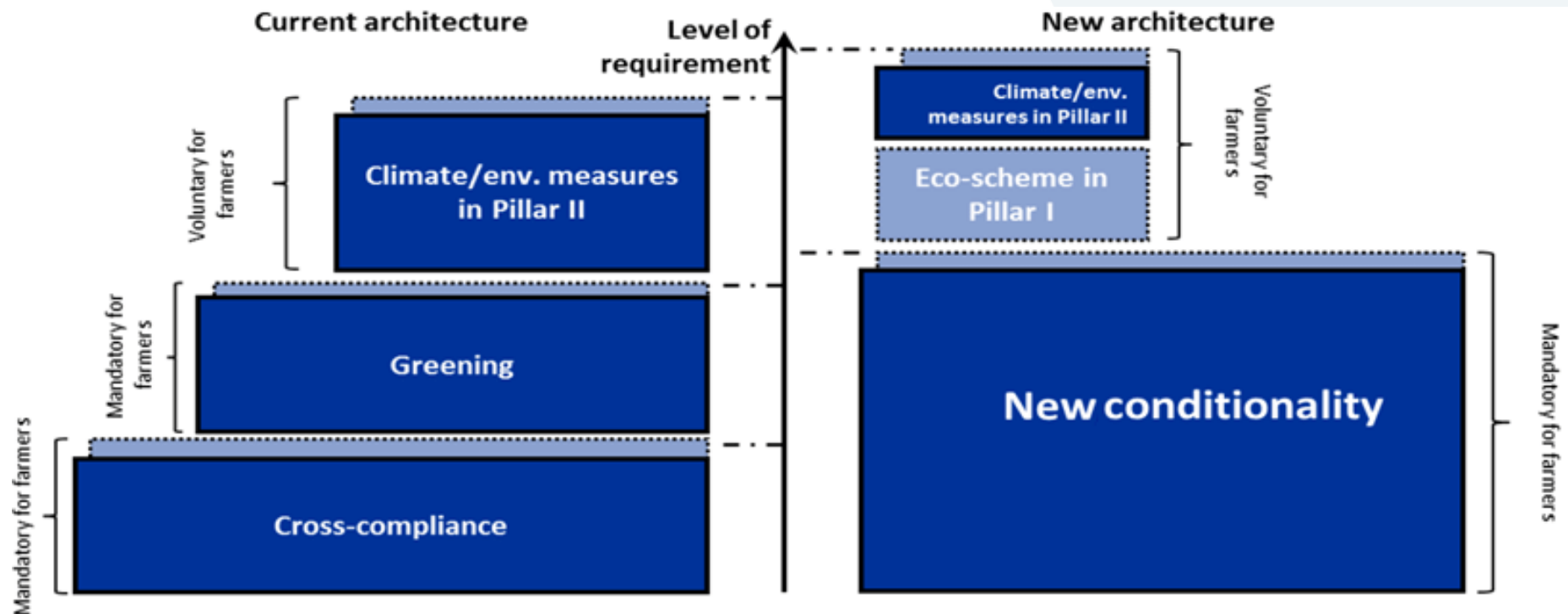
- **CAP interventions** must contribute to **9 EU objectives**
- **approval** of the CAP strategic plan by **European Commission**

CAP strategic plan – new structure

- one **strategic plan** covering Direct Payments, Rural Development and Sector Programmes
- two funds: **EAGF** und **EAFRD**
- **result-oriented** policy
- more **subsidiarity** for member states
- at least **30%** of RDP payments for **environment and climate protection**
- at least **40%** of total CAP payments for **climate protection**



Current (2014–20) and future (2021–27) CAP architecture



source: adopted from European Commission (2018)

Continuation of CAP instruments

- Direct Payments
- Agri-environmental Programme
- Compensatory Allowance in Less Favoured Areas
- Investment Funds
- Training and Advisory Services
- Market Measures



© BMNT

Preliminary dates

- discussion on **multiannual financial framework**
- discussion on **EU legislation** – trialogue (expected **first quarter of 2020**) and following **implementing regulations**
- **national process** (CAP strategic plan) and **approval by the EC**
- start of the **new CAP** in **2022** at the earliest



© Stadler (BMNT)

Any questions?



© BMNT (2016)