



Soil map and Sustainable Operation Network in the Danube Region (SONDAR)



ARBEITSGEMEINSCHAFT
DONAU LÄNDER
PRACOVNÍ SPOLUČENSTVÍ
PODUNAVSKÝCH ZEMÍ
PRACOVNÉ SPOLOČENSTVO
PODUNAVSKÝCH KRAJIN
DUNAVENKI TARTOMÁNYOK
MUNKAKÖZÖSSÉGE
RADNA ZAJEDNICA
PODUNAVSKIH REGIJA
RADNA ZAJEDNICA
PODUNAVSKIH ZEMLJA
COMUNITATE DE LUCRU
A STATULOR DIN ARDE
РАБОТНА ОБЩНОСТ
ДУНАВСКИХ СТРАН
РАБОЧА СПІВСПІЛЧІСТЬ
ПІДПІСНИКІВ КРАІВ



WORKING COMMUNITY of the DANUBE REGIONS
Working Group "Sustainability, Energy, Environment", Ulm, 28th of October 2015
DI Dr. Erwin Szlezak from Lower Austria

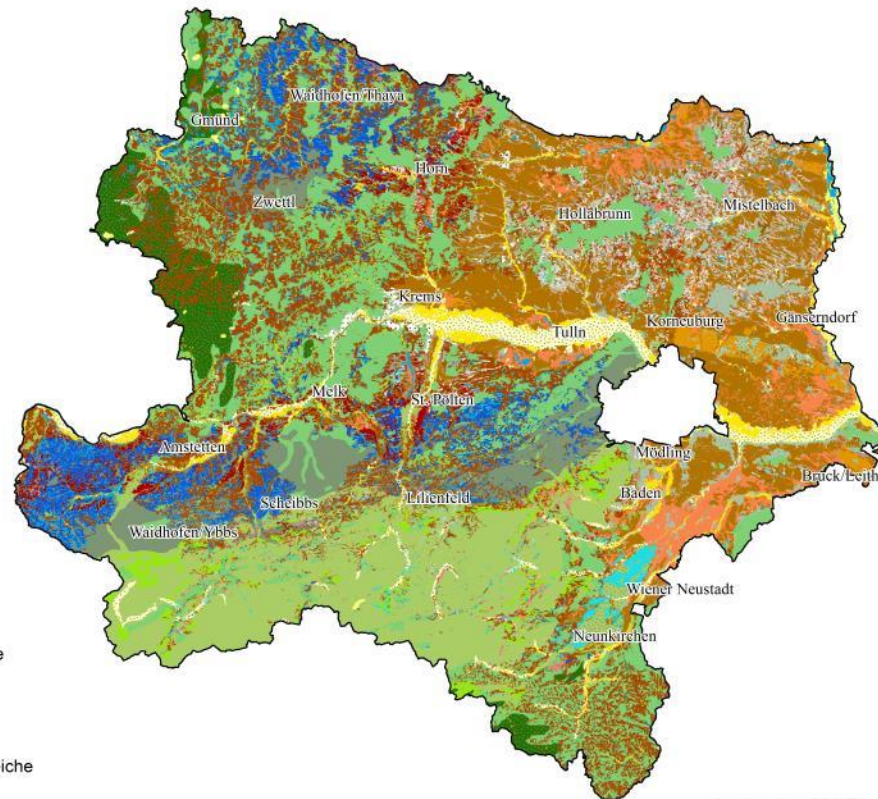




Updating the soil map of the Danube countries at the example of Lower Austria

Landwirtschaftlich
genutzte Böden
Waldböden

- Rendzina
- Pararendzina
- Ranker
- Tschernosem
- Paratschernosem
- Braunerde
- Parabraunerde
- Podsol
- Semipodsol
- Kalkbraunlehm
- Kolluvisol
- Kultur-Rohboden
- Pseudogley
- Auboden
- Gleye und Moore
- Feuchtschwarzerde
- Solontschak
- Sonstige
- Nicht kartierte Bereiche



Datengrundlage: BFW, Till 1937
Inhaltliche Gestaltung:
W. Wenzel, R. Hölzl, P. Strauss, M. Englisch, E. Herzberger, R. Reiter 2013
Im Auftrag der niederösterreichischen Agrarbezirksbehörde
Projektleitung: Erwin Szlezak



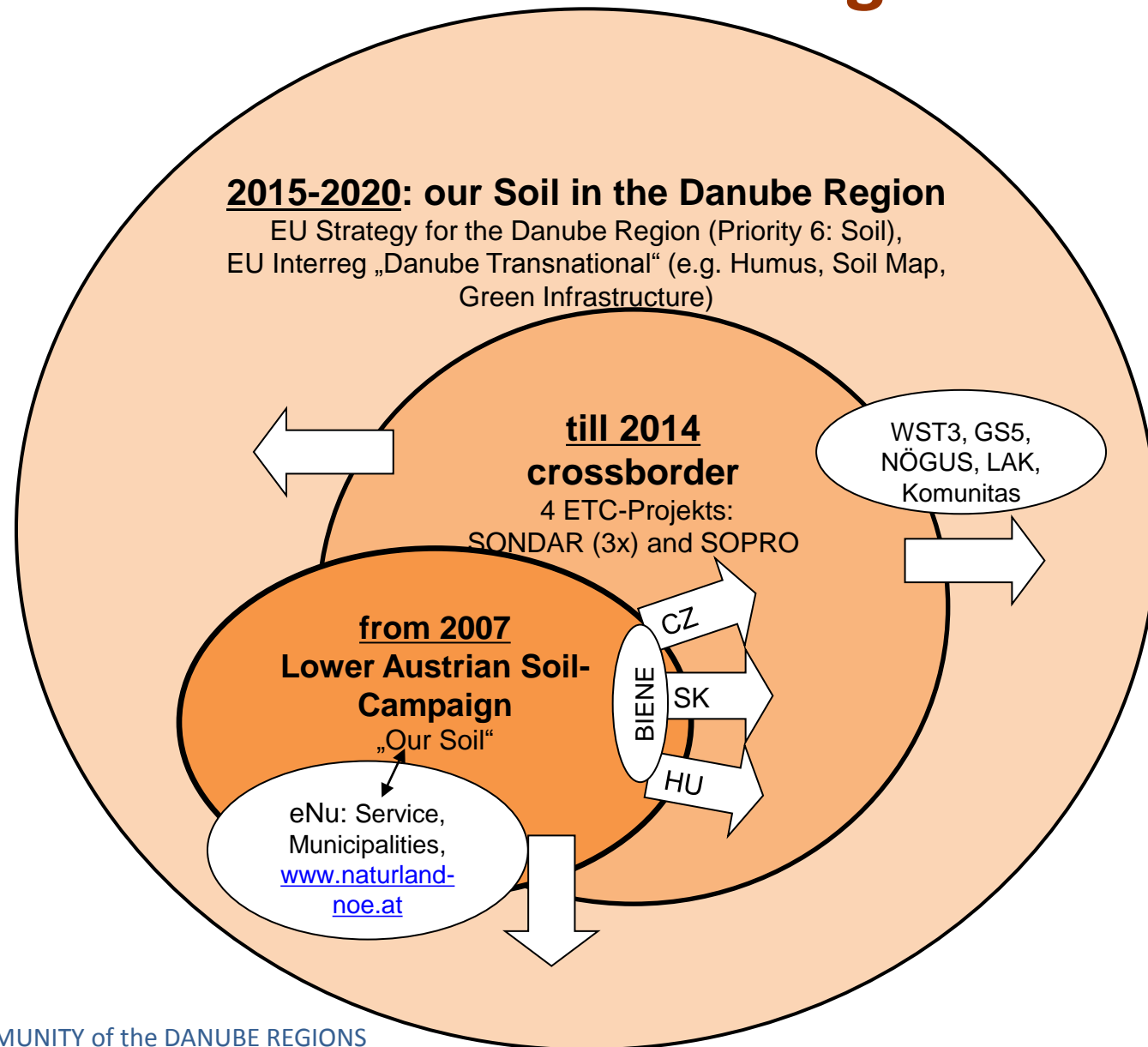
1:1.000.000 0 5 10 20 km



ARBEITSGEMEINSCHAFT
DONAU-LÄNDER
PRACOVNÉ SPOLEČENSTVO
PODUNÁSKÝCH ZEMÍ
PRACOVNE SPOLOČENSTVO
PODUNÁSKÝCH KRAJIN
DUNAVI TARTOMÁNYOK
MUNKAKÖZÖSSÉGE
RADNA ZAJEDNICA
PODUNAVSKIH REGIJA
RADNA ZAJEDNICA
PODUNAVSKIH ZEMLJA
COMUNITATEA DE LUCRU
A STATELOR DIN ARDE
PAGOTHA OBLAST
JYHABOKH CTPAHH
PODUNA CIBUPCKOCT
TPUDHAKCKA KPAH



Our Soil in the Danube Region



ARBEITSGEMEINSCHAFT
DONAU-LÄNDER
PRACOVNÍ SPOLUPRÁCE
PODUNÁSKÝCH ZEMÍ
PRACOVNÉ SPOLOČENSTVO
PODUNÁSKÝCH KRAJIN
DUNARENŢI TARTOMÁNYOK
MUNKAKÖZÖSSÉGE
RADNA ZAJEDNICA
PODUNAVSKIH REGIJA
RADNA ZAJEDNICA
PODUNAVSKIH ZEMLJA
COMUNITATEA DE LUCRU
A STATELOR DIN ARDE
RABOTHA ORSHOOST
ДУНАВСКИ СЪПРАНИ
ПОДНАВСКІЯ ЗЕМЛІ
ПОДНАВСКІЯ КРАІН



Soil Strategy Network in the Danube Region

3 ETC-Projekts between Lower Austria with SK, HU, CZ

Soil awareness
Sensibly use, carefully protect our soil



www.sondar.eu

in execution:



Soil as an indicator of flood
occurrences

in execution:



Soil as a filter for pollutants /
soil as a reservoir for carbon

scheduled:



Improving quality of soil by
raising soil awareness/
soil as an archive



October 2015



ARBEITSGEMEINSCHAFT
DONAULÄNDER
PRACOVNÍ SPOLUČENSTVÍ
PODUNÁSKÝCH ZEMÍ
PRACOVNÉ SPOLOČENSTVO
PODUNÁSKÝCH KRAJIN
DUNÁNTARTOMÁNYOK
MUNKAKÖZÖSSÉGE
RADNA ZAJEDNICA
PODUNAVSKIH REGIJA
RADNA ZAJEDNICA
PODUNAVSKIH ZEMALJA
COMUNITATEA DE LUCRU
A STATULOR DIN ARDE
РАБОТНА ОБИДНОСТ
ДУНАВСКИ СТРАНИ
РАБОЧА СІЛУПРІСНІСТЬ
ПРАЦІВНИКІВ КРАІН





Soil Protection in Lower Austria

New Plantings

- about 30 hectares per year
- about 80% of new installations
- about 20% Re-greening of old facilities

Care Measures

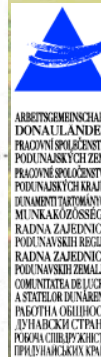
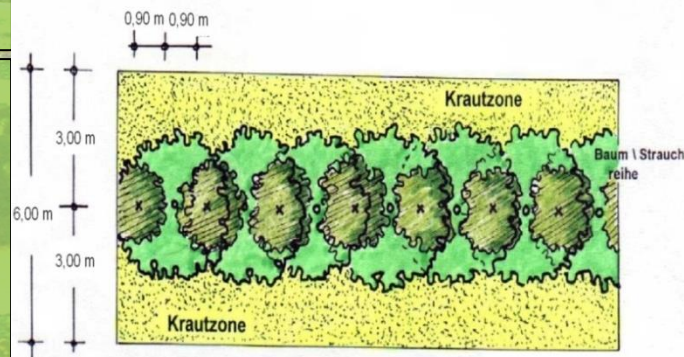
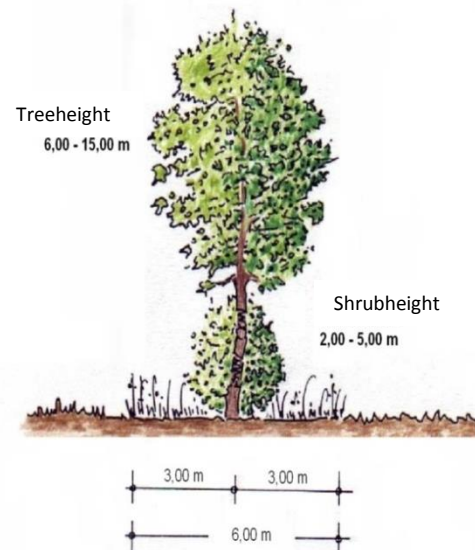
- about 900 greeneries
- on 150 hectares (3 Operations per year)
- in 120 cadastral municipalities

Total Stock (since 1958)

- about 3.000 hectares

Plant requirements per year

- an average of 20.000 trees
- an average of 80.000 shrubs
- mainly produced in our own tree nursery
- from regional seed – gained in Lower Austria





Save the Date:
13.+14.4.2016 Conference of the Danube Countries in Tulln

Thanks for your attention

DI Dr. Erwin Szlezak & DI Christian Steiner

*ARGE Donauländer, AK Nachhaltigkeit – Bereich Boden
NÖ Agrarbezirksbehörde/Fachabteilung Landentwicklung
Landhausplatz 1, 3109 St. Pölten*

christian.steiner@noel.gv.at

erwin.szlezak@noel.gv.at

www.unserboden.at / www.sondar.eu / www.soilart.eu / www.sozialproduziert.at